

WASTEWATER DEPARTMENT CITY OF MANNHEIM



TABLE OF CONTENTS

Key dates

Locations und employees

Organisation

Distribution of staff

Wastewater charges and expenses

Expense distribution

Sewage disposal

Age structure of sewers

Sewerage system inspection

Sewer database

Renovation and construction of sewer

Wastewater treatment plant

Environmental performance

Material balance

Renewable energies



KEY DATES

Foundation	1997-01-01
Employees	240
Fixed assets	367 Mio. €
Investment	11,9 Mio. €
Quality and Environmental Management System Certified according to EN ISO 9001 / EN ISO 14001	since 2003-01

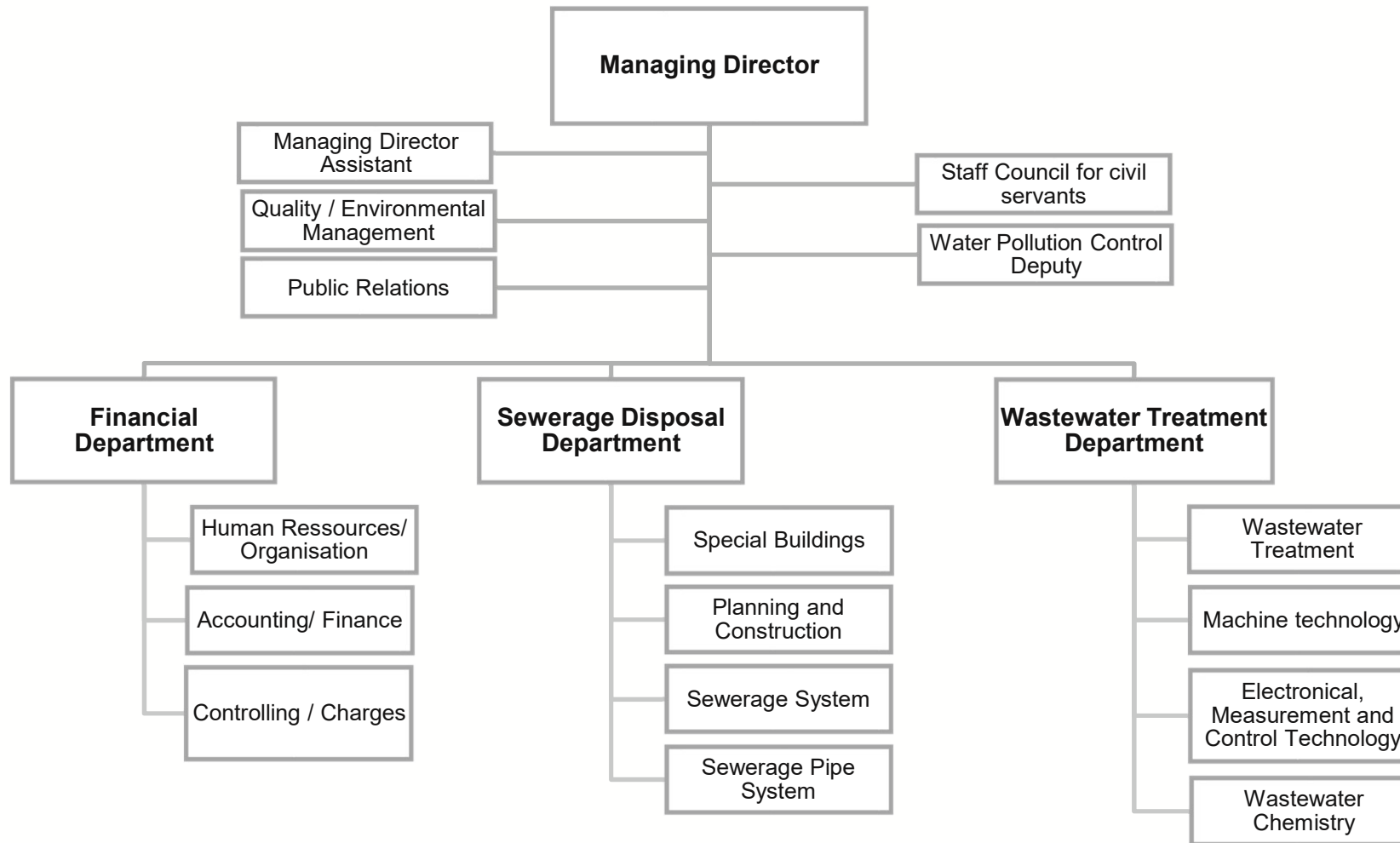


KEY DATES

Sewage treatment plant	725.000 population equivalents (design size) approx. 90.000 m ³ flow of wastewater per day
Sewage system	843 km (without house connection sewers) combined discharge 38 pumping stations 32 lifting equipments
Rain-/storm water treatment	8 overflow basins 8 storm water retention tanks 15 storage capacities of sewer 2 rainwater infiltration facilities
Retention volume in total	approx. 170.000 m ³



ORGANISATION

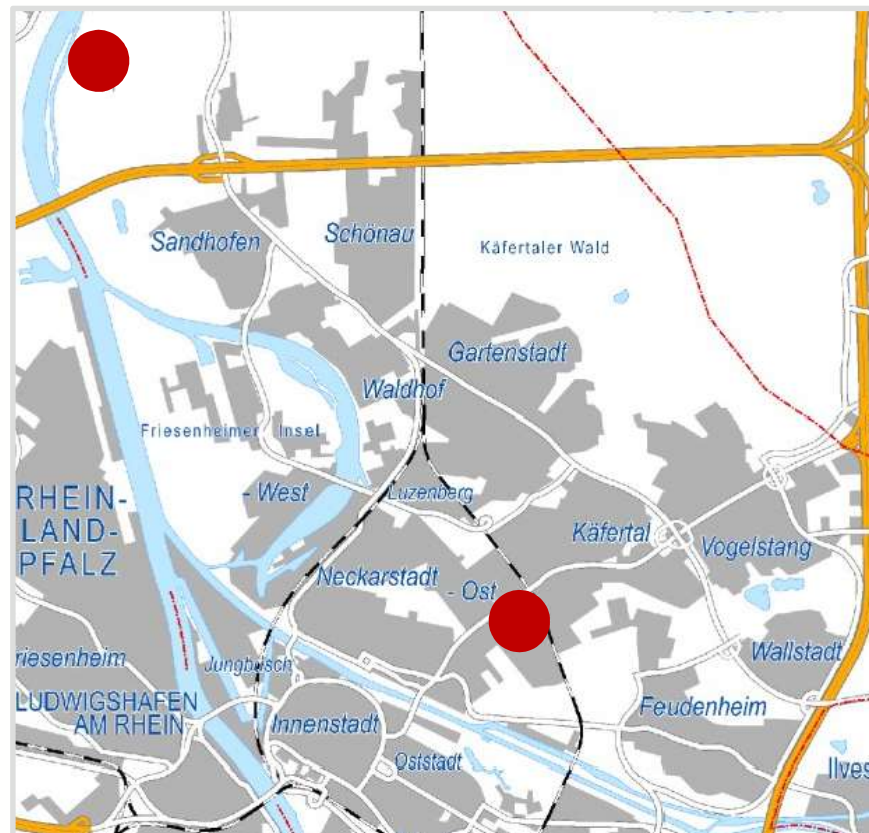


LOCATIONS AND EMPLOYEES

Wastewater treatment

154 employees

Karl-Imhoff-Straße 50
68307 Mannheim



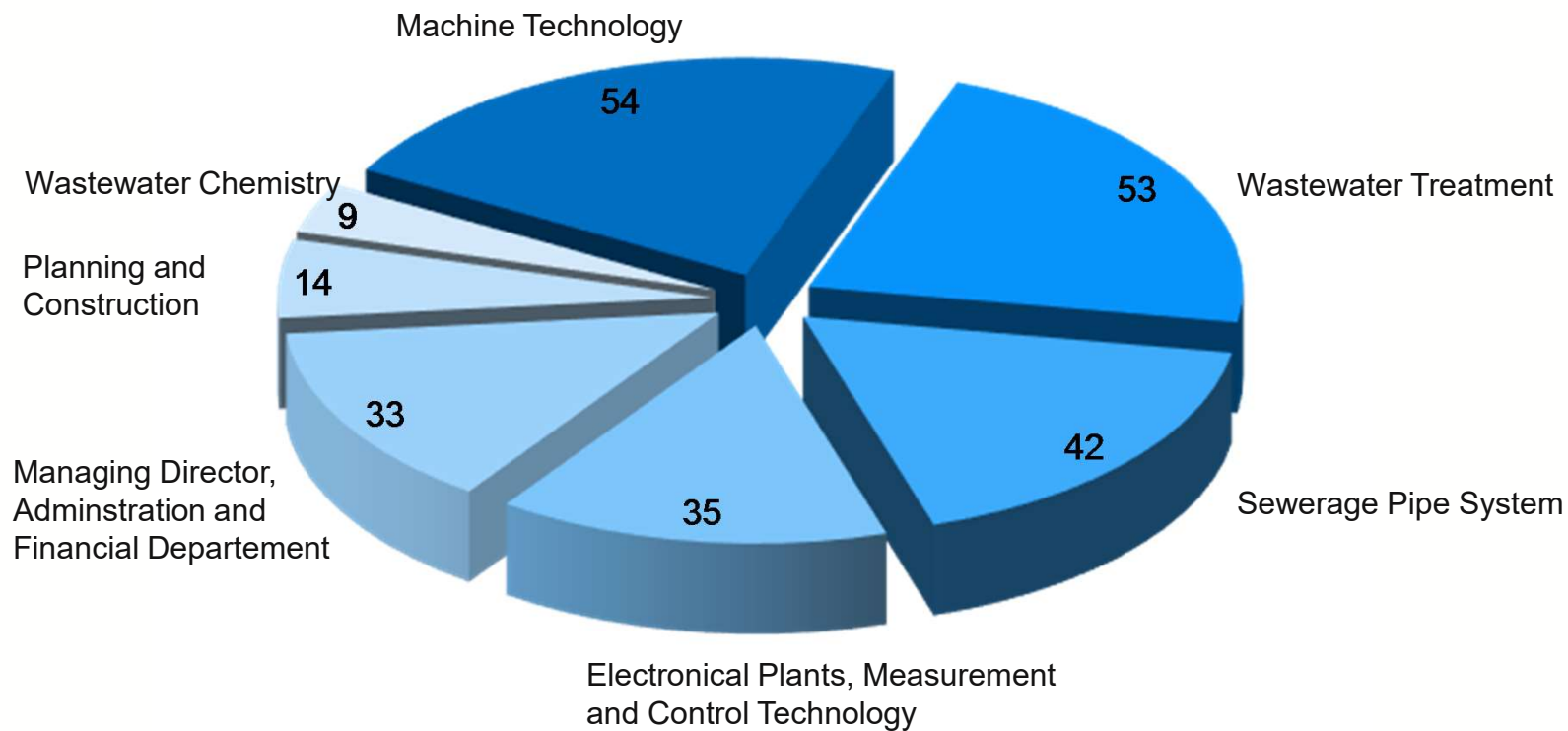
Sewerage disposal and administration

86 employees

Käfertaler Straße 265
68167 Mannheim



DISTRIBUTION OF STAFF



Employees in total: 240



WASTEWATER CHARGES AND EXPENSES

Sewage fees

Per cubic metre of delivered drinking water 1,68 €

Rain water fees

Per square metre and year of drained surface 0,81 €

Income (Wastewater Charges) 61,2 Mio. €

Material costs 12,7 Mio. €

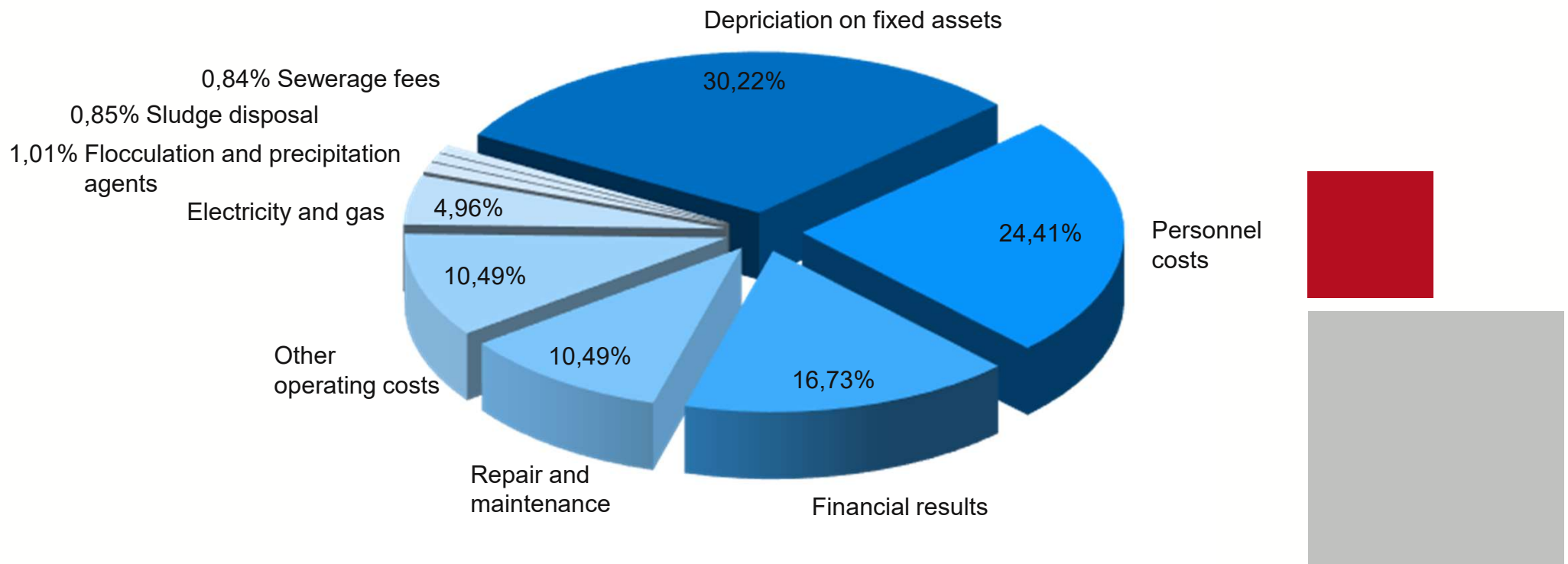
Personnel costs 15,0 Mio. €

Depreciations 18,6 Mio. €

Financial result 10,3 Mio. €



EXPENSE DISTRIBUTION



SEWERAGE DISPOSAL

Sewerage system length

843 km under the responsibility of EBS Mannheim

Year of sewerage system construction

Since 1876

Sewer section

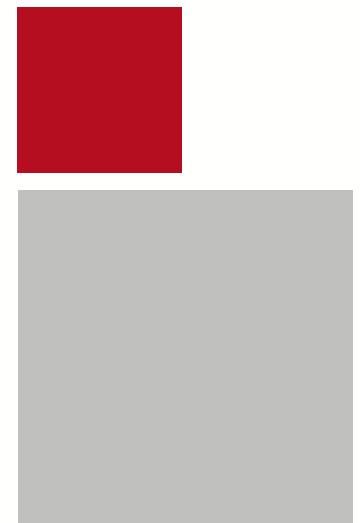
250 – 5.200 mm

Canalized area

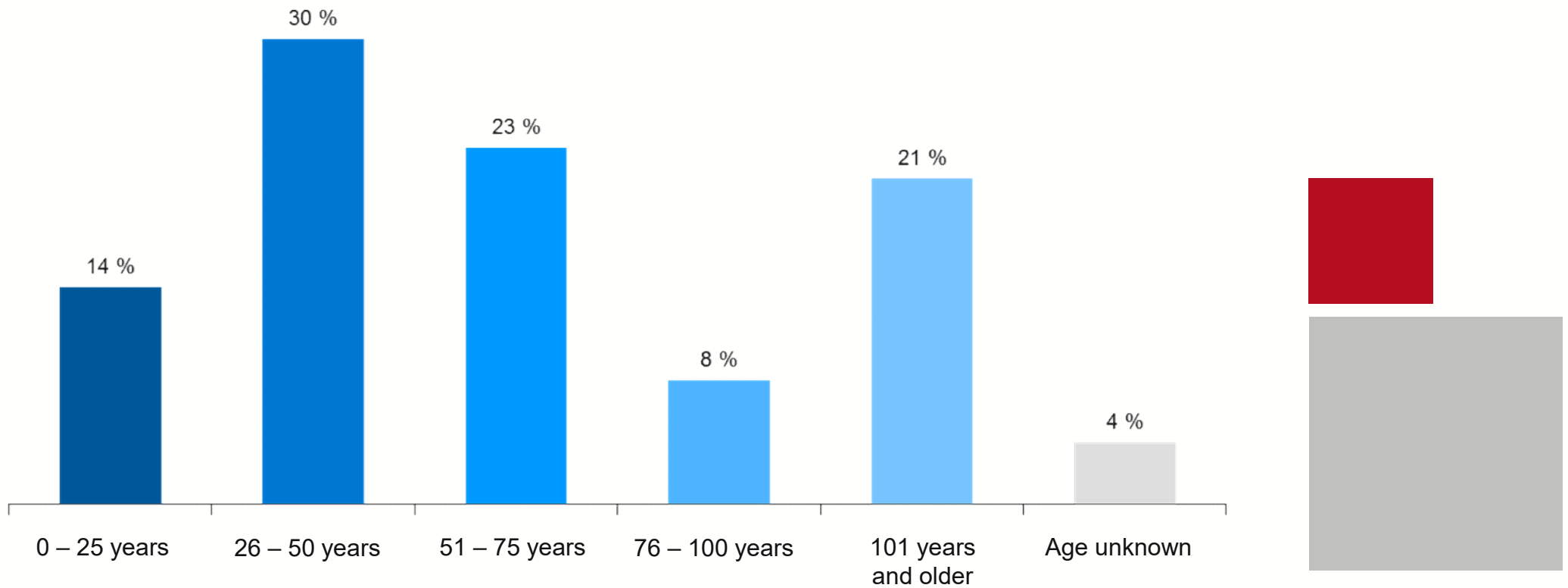
approx. 7.100 ha

Connection to sewerage system

99,9 %



AGE STRUCTURE OF SEWERS



SEWERAGE SYSTEM INSPECTION

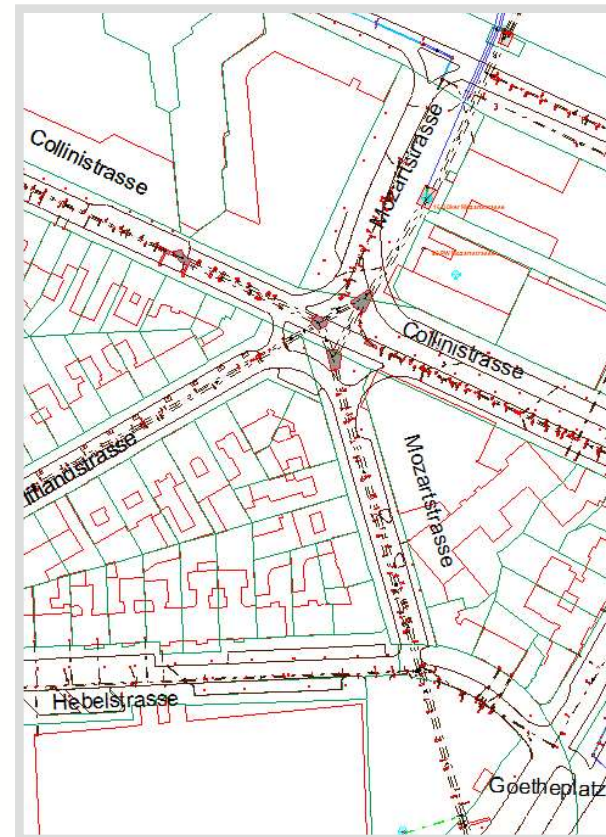
Digital based on TV examination (since 1986)	92,7 %
Analog based on walking through	7,3 %
Examination in total	100 %



SEWER DATABASE

Administration of the sewer inventory data for the whole urban area

- Survey data (channel geometry and topography)
- Data from the TV-Inspection – Gathering of the sewer conditions
- Gathering of the house connections (noozles)
- Special buildings
- Hydraulic performance of the sewer system
- Indirect discharge
- Data of the plants



RENOVATION AND CONSTRUCTION OF SEWER

Length in total of

repaired sewer:

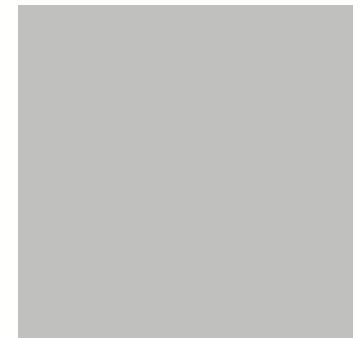
approx. 4,5 km

renovated sewer:

approx. 1,5 km

renewed sewer:

approx. 1 km



WASTEWATER TREATMENT PLANT

Operation

- 1973 Wastewater treatment plant
- 1986 Filtration
- 1999 New biological plant
- 2016 Fourth treatment stage (removal of pharmaceuticals, etc.)

Flow of wastewater at dry weather conditions
per day: approx. 90.000 m³

725.000 population equivalents (design size),
approx. 50% from the industry



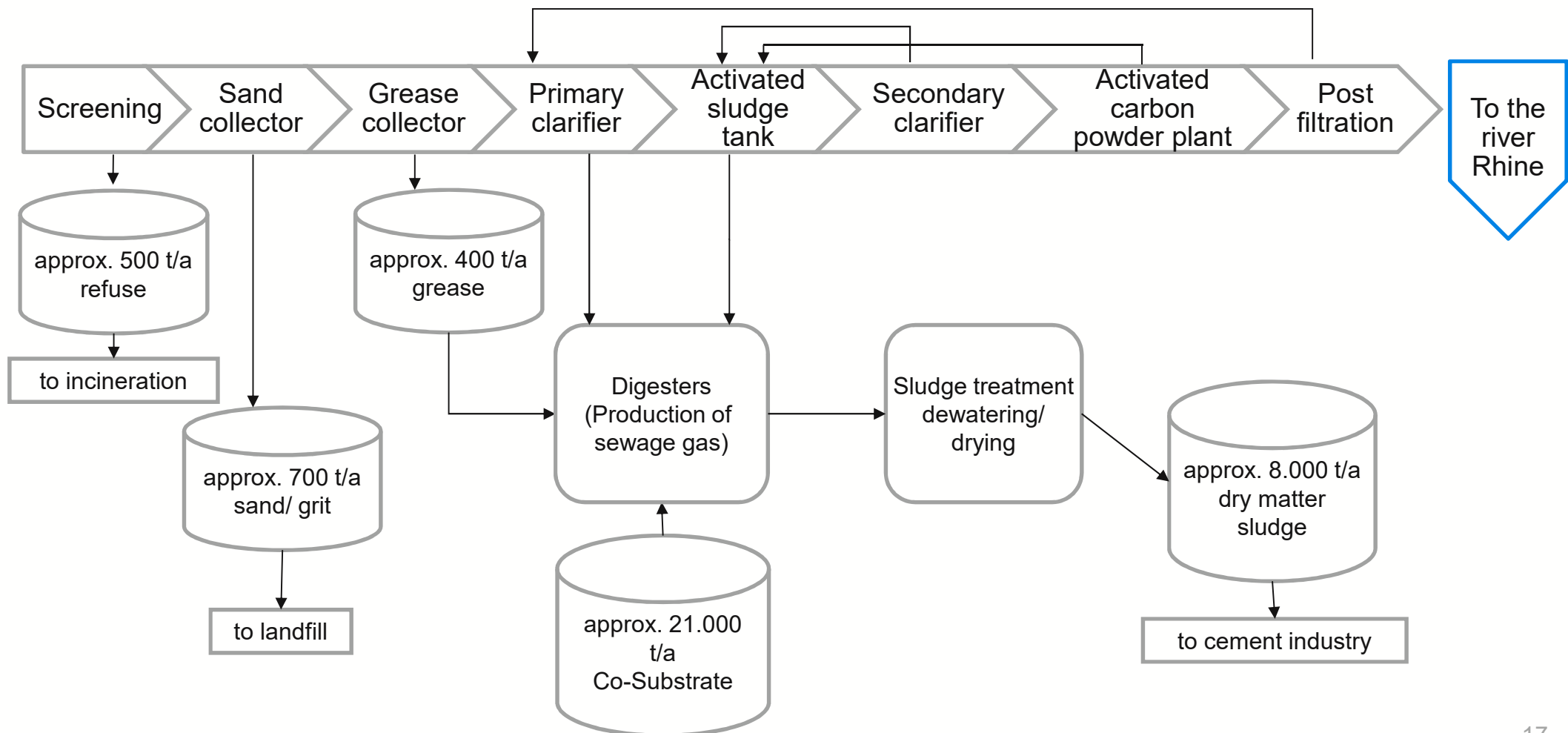
ENVIROMENTAL PERFORMANCE

		Raw waste water mg/l	Treated waste water mg/l	Efficiency level %
Chemical oxygen demand	COD	781	22	97,2
Organic carbon in total	TOC	256	7,3	97,1
Nitrogen in total	N _{tot}	69	4,9	92,9
Phosphor in total	P _{tot}	9,7	0,1	98,9



MATERIAL BALANCE

Raw water: approx. 33 Mio. m³ flow of wastewater per year (approx. 90.000 m³ flow of wastewater per day)



RENEWABLE ENERGIES

Sludge treatment at the digesters

since 1973 Digesters

since 1996 Drying



To generate electricity and heat :

→ Co-generation plant

To generate heat :

→ Sludge drying

Photovoltaic and Waterpower

since 2007



To generate electricity:

→ Solarpanel on top of the filtration plant

→ Water wheel at the outlet to the rhine

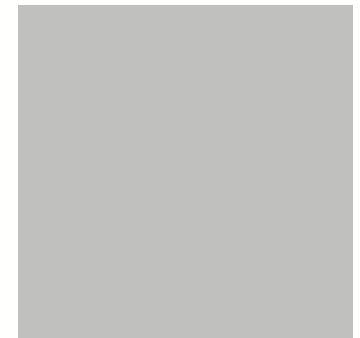
Supply of Co-Substrates

since 2012



To generate additional gas:

→ Co-Substrates will be supplying at the digesters in addition



Contact:
Stadtentwässerung Mannheim
Käfertaler Straße 265
68167 Mannheim
Phone: 0621 293-5210
Fax: 0621 293-5211
Mail: stadtentwaesserung@mannheim.de

